



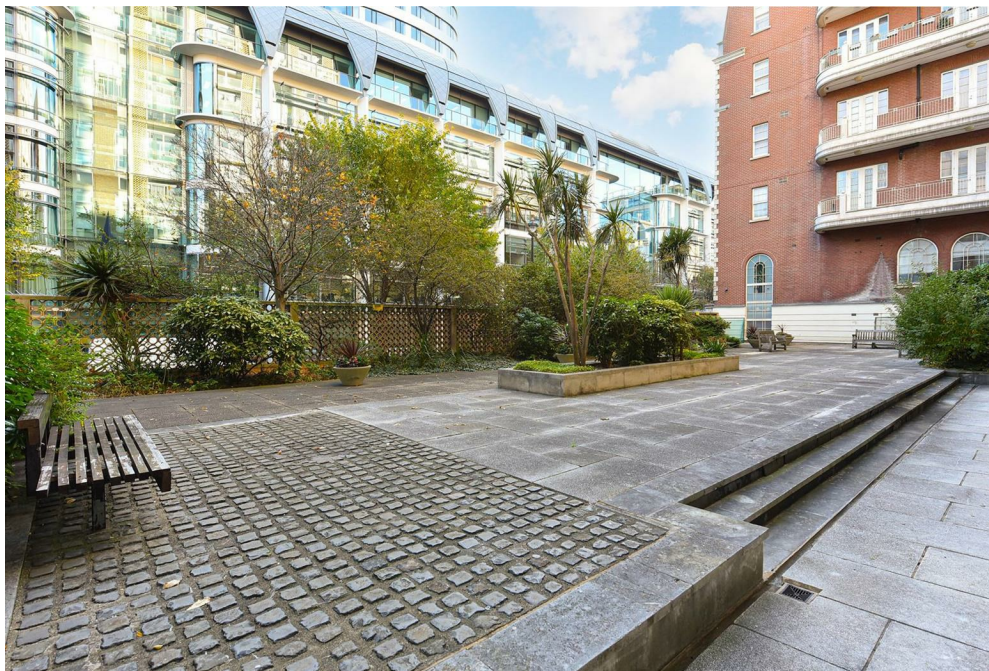
Bilton Towers,  
Great Cumberland Place, W1H

Asking Price £2,300,000, Leasehold

NAPIER WATT

T: 0207 935 0011  
E: [enquiries@napierwatt.co.uk](mailto:enquiries@napierwatt.co.uk)  
W: [napierwatt.co.uk](http://napierwatt.co.uk)

35 Berkeley Square, Mayfair, London, W1J 5BF





## Description

AQUIRED FOR BUYER DECEMBER 2021 - More Similar Properties Required

Situated in the highly-sought after Bilton Towers moments from Hyde Park and Oxford Street, is this spectacular four-bedroom, three-bathroom apartment nestled on the 10th floor. Requiring modernisation, this property offers panoramic views over the London Skyline, and benefits from a courtyard garden, direct lift access, and 24-hour portage service. Comprising four double bedrooms, three bathrooms (all en suite), two guest cloakrooms, a spacious open-plan kitchen and reception room as well as three private balconies. Bilton Towers is conveniently located for the many amenities of Oxford Street and Bond Street as well as the prestigious restaurants and bars in Marylebone and Mayfair. Transport links including Marble Arch (Central Line) and Bond Street (Central and Jubilee Line) Underground Stations.

## Key Features

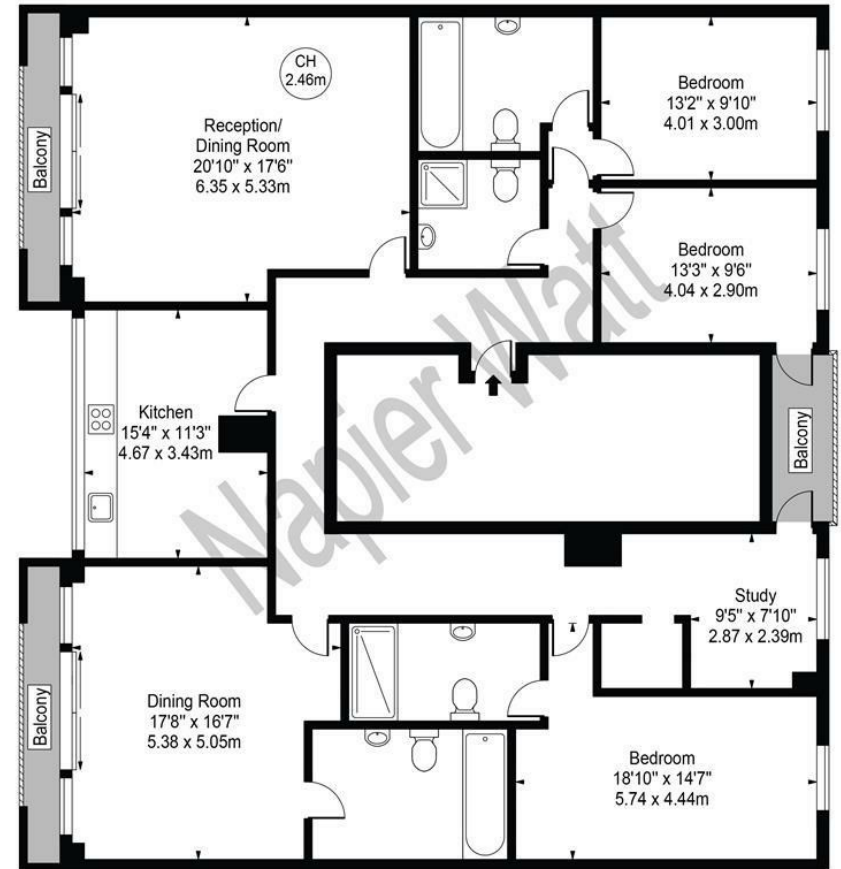
- 10th FLOOR WITH LIFT
- SUPERB SOUTH FACING VIEWS
- IN NEED OF WORK
- 200M OXFORD STREET & MARBLE ARCH
- 24 HOUR CONCIERGE
- BALCONIES
- COMMUNAL GARDEN
- EASY ACCESS TO HYDE PARK

## Terms

99 years (less 15 days) from 29 September 1949 ie 27 years  
£320.0.0. and Insurance rent

## Bilton Towers

Approx. Gross Internal Area 2001 Sq Ft - 185.90 Sq M 



### Tenth Floor

For Illustration Purposes Only - Not To Scale

This floor plan should be used as a general outline for guidance only and does not constitute in whole or in part an offer or contract. Any intending purchaser or lessee should satisfy themselves by inspection, searches, enquiries and full survey as to the correctness of each statement. Any areas, measurements or distances quoted are approximate and should not be used to value a property or be the basis of any sale or let.

IMPORTANT: We would inform prospective purchasers that these sales particulars have been prepared as a general guide only. A detailed survey has not been carried out, nor the services, appliances and fittings tested. Room sizes should not be relied upon for furnishing purposes and are approximate. If floor plans are included, they are for guidance only and illustration purposes only and may not be to scale. If there are any important matters likely to affect your decision to buy, please contact us before viewing the property.